

KD-Validated Anti-C-terminal binding protein 2 Rabbit Monoclonal Antibody
Rabbit monoclonal antibody
Catalog # AGI1500**Specification**

KD-Validated Anti-C-terminal binding protein 2 Rabbit Monoclonal Antibody - Product Information

Application	WB, FC
Primary Accession	P56545
Reactivity	Rat, Human, Mouse
Clonality	Monoclonal
Isotype	Rabbit IgG
Calculated MW	Predicted, 49 kDa , observed, 47 kDa KDa
Gene Name	CTBP2
Aliases	CTBP2; C-Terminal Binding Protein 2; Ribeye; RIBEYE; CtBP2
Immunogen	A synthesized peptide derived from human CTBP2

KD-Validated Anti-C-terminal binding protein 2 Rabbit Monoclonal Antibody - Additional Information

Gene ID	1488
Other Names	
C-terminal-binding protein 2, CtBP2, CTBP2	

KD-Validated Anti-C-terminal binding protein 2 Rabbit Monoclonal Antibody - Protein Information**Name** CTBP2**Function**

Corepressor targeting diverse transcription regulators. Functions in brown adipose tissue (BAT) differentiation (By similarity).

Cellular Location

Nucleus. Synapse.

Tissue Location

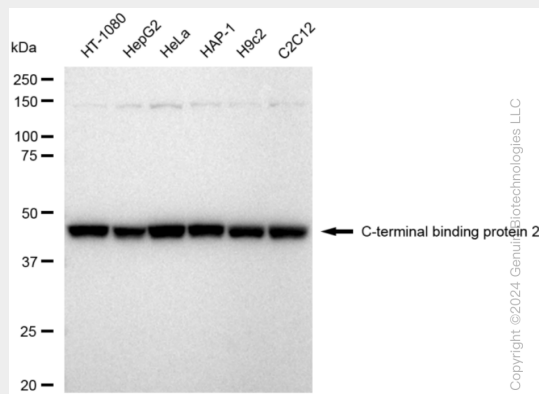
Ubiquitous. Highest levels in heart, skeletal muscle, and pancreas

KD-Validated Anti-C-terminal binding protein 2 Rabbit Monoclonal Antibody - Protocols

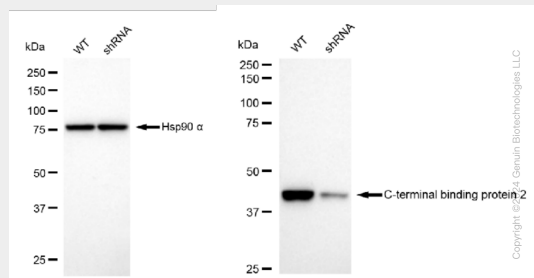
Provided below are standard protocols that you may find useful for product applications.

- [Western Blot](#)
- [Blocking Peptides](#)
- [Dot Blot](#)
- [Immunohistochemistry](#)
- [Immunofluorescence](#)
- [Immunoprecipitation](#)
- [Flow Cytometry](#)
- [Cell Culture](#)

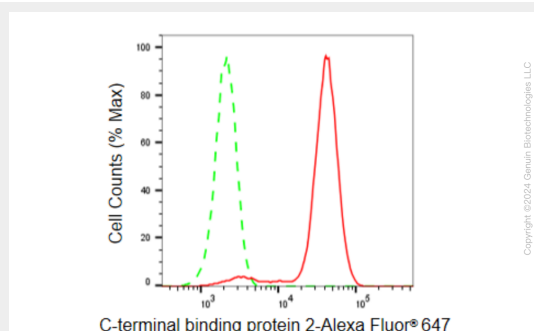
KD-Validated Anti-C-terminal binding protein 2 Rabbit Monoclonal Antibody - Images



Western blotting analysis using anti-C-terminal binding protein 2 antibody (Cat#AGI1500). Total cell lysates (30 μ g) from various cell lines were loaded and separated by SDS-PAGE. The blot was incubated with anti-C-terminal binding protein 2 antibody (Cat#AGI1500, 1:5,000) and HRP-conjugated goat anti-rabbit secondary antibody respectively.



Western blotting analysis using anti-C-terminal binding protein 2 antibody (Cat#AGI1500). C-terminal binding protein 2 expression in wild type (WT) and C-terminal binding protein 2 shRNA knockdown (KD) HT-1080 cells with 30 μ g of total cell lysates. Hsp90 α serves as a loading control. The blot was incubated with anti-C-terminal binding protein 2 antibody (Cat#AGI1500, 1:5,000) and HRP-conjugated goat anti-rabbit secondary antibody respectively.



Flow cytometric analysis of C-terminal binding protein 2 expression in HeLa cells using C-terminal

binding protein 2 antibody (Cat#AGI1500, 1:2,000). Green, isotype control; red, C-terminal binding protein 2.